

Clayton County 2023 Q1 Update

March 7, 2023

Collie Greenwood

General Manager/CEO



Agenda

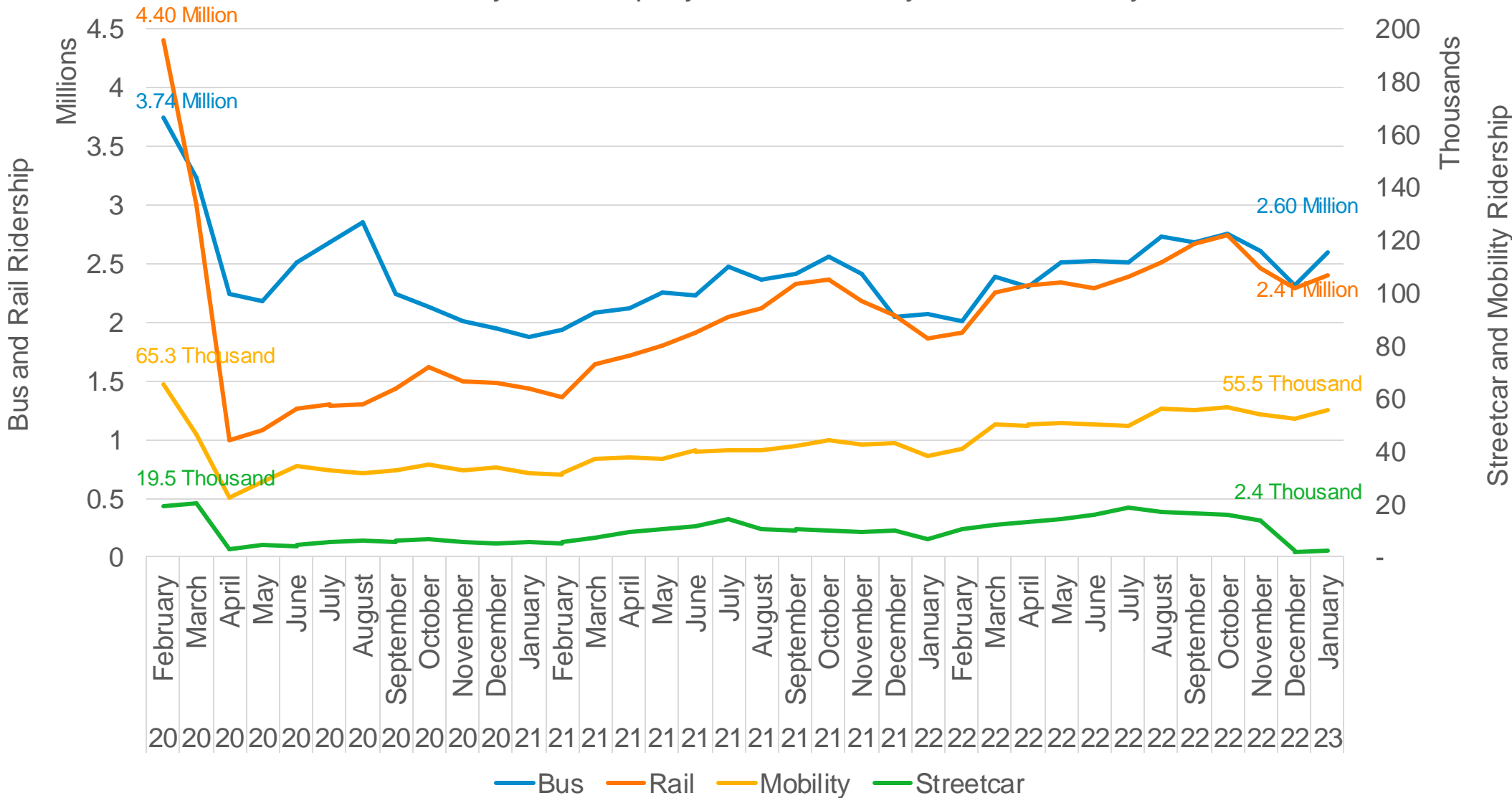
Operations Updates

MARTA 2040 Capital
Expansion



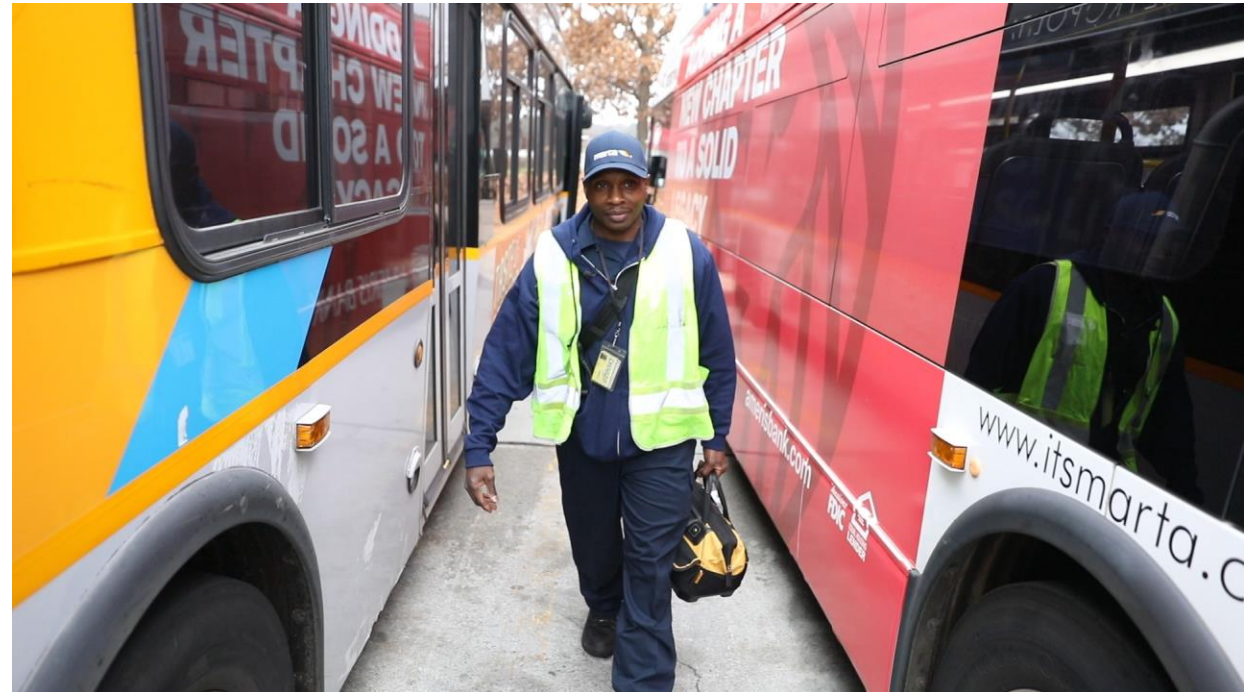
Operations Updates

MARTA Monthly Ridership by Mode February 2020 - January 2023



WORKFORCE & SERVICE UPDATE

- ✓ Operator recruitment and hiring has been successful and vacant positions have been filled.
- ✓ Absenteeism ranges from 18% (rail) to 25% (bus) due to FMLA, call outs.



MARTA REACH PILOT PROGRAM

Evaluation Phase includes:

- ✓ Demographic comparison of riders vs. zones
- ✓ Service optimization (how would changing service levels impact wait times, efficiency, ridesharing %)
- ✓ Micro-transit impacts to access (jobs, workers, healthcare, etc.)
- ✓ Cost analysis

MARTA Board discussions will be held this Spring.





MARTA 2040 Capital Expansion

CLAYTON COUNTY EXPANSION PROJECTED SOURCES & USES (\$M)

	FY23	FY24	FY25	FY26	FY27	FY28	FY29	FY30	FY31	FY32	Totals FY23-FY32
Beginning Balance (Reserves)	177.3										177.3
Revenues											
Capital Sales Tax (Expansion % Only)	32.8	34.4	36.0	37.4	38.8	40.4	42.3	44.3	46.1	48.1	400.7
Awarded Federal Funds	4.0	7.4	1.2	1.2	0.0	0.0	0.0	0.0	0.0	0.0	13.7
Potential Federal Funds	0.2	0.6	9.3	33.7	69.1	83.4	76.8	79.5	49.4	0.0	402.1
Debt Issue (30Y P+I)	0.0	0.0	0.0	141.0	105.0	48.0	68.0	5.0	0.0	0.0	367.0
Total Sources of Funds	214.3	242.1	209.5	258.5	214.0	172.5	187.9	130.0	96.6	114.1	1,360.8
Expenditures											
More Marta Clayton Capital	14.5	79.1	164.3	250.3	199.6	153.7	159.0	98.8	0.0	3.0	1,122.3
<i>Clayton County, Riverdale BRT (SouthLake)</i>	2.4	29.7	88.4	136.0	80.7	0.0	0.0	0.0	0.0	0.0	337.2
<i>Clayton County HCT</i>	1.5	4.7	14.7	57.4	118.8	153.7	159.0	98.8	0.0	0.0	608.6
<i>Clayton O&M Facility (Clayton's Share)</i>	1.5	39.7	61.2	56.9	0.1	0.0	0.0	0.0	0.0	0.0	159.4
<i>Clayton County Justice Center</i>	0.1	5.0	0.0	0.0	0.0	0.0	0.0	0.0	0.0	0.0	5.1
<i>Capital Rehabilitation/Replacement</i>	0.0	0.0	0.0	0.0	0.0	0.0	0.0	0.0	0.0	3.0	3.0
<i>Clayton Real Estate & Contingency</i>	9.0	0.0	0.0	0.0	0.0	0.0	0.0	0.0	0.0	0.0	9.0
Clayton Operating	0.0	0.0	0.0	2.3	2.4	3.1	8.2	8.5	8.8	16.2	49.5
Debt Service (Bonds & FRN)	0.0	0.0	0.0	4.9	11.3	15.0	19.4	21.6	21.8	21.8	115.8
Total Uses of Funds	14.5	79.1	164.3	257.5	213.2	171.8	186.6	128.9	30.7	41.0	1,287.7

CREDIT RATING UPGRADE - AAA

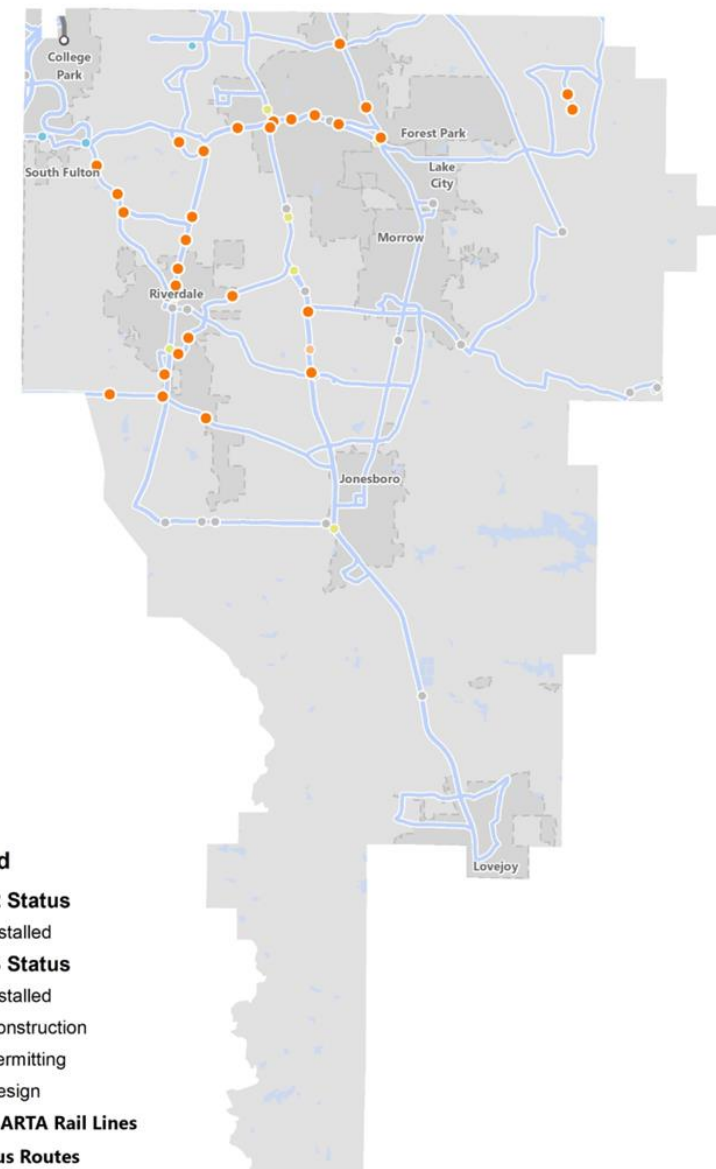
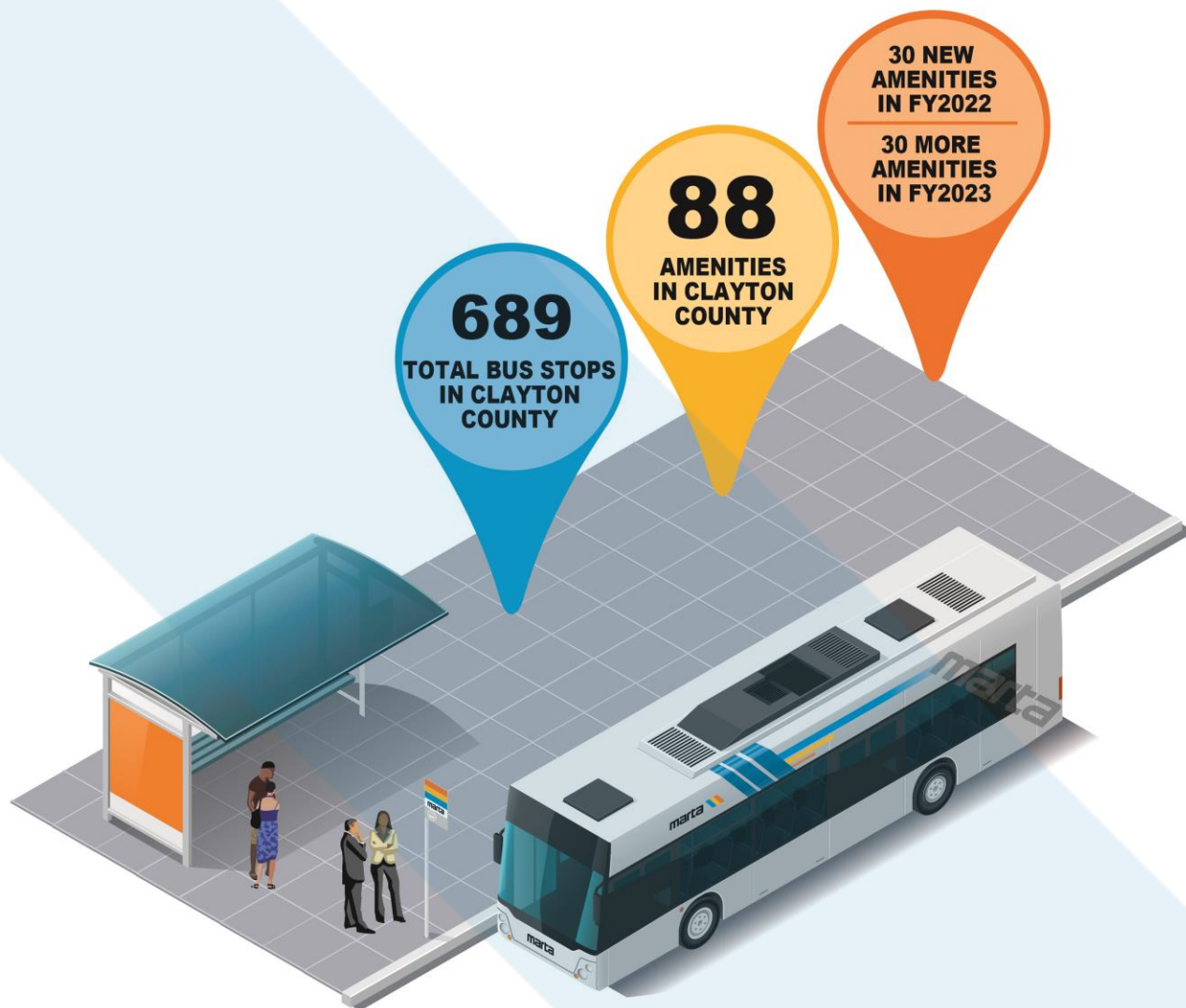
- ✓ Significantly growing, broad based sales tax pledge
- ✓ Substantial and growing reserve balances
- ✓ CIP projected to be fully funded while maintaining high DSCRs
- ✓ Ten consecutive years of operating surpluses
- ✓ Ridership continues to recover (+16.0% CY2022 vs. CY2021)
- ✓ Experienced transit management team with strong budgeting practices

MARTA earns perfect credit rating from top credit and bond rating agencies

By Rachel Kellogg @RachelNBR Feb 17, 2023 0

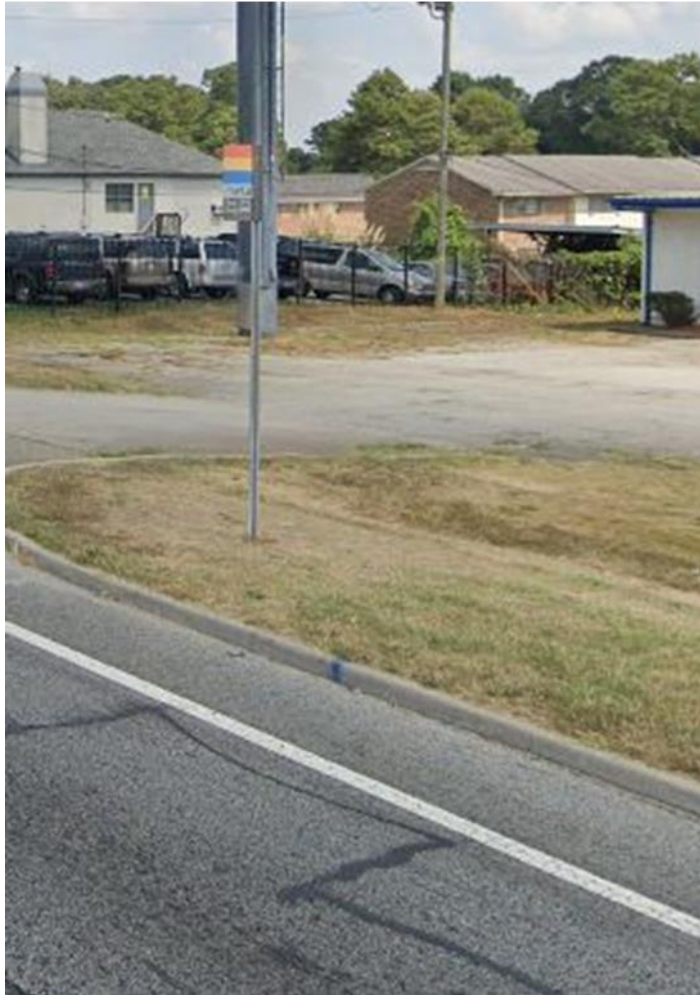


FY23 BUS SHELTERS & AMENITIES UPDATE



FY23 BUS SHELTERS & AMENITIES UPDATE

212659 – Tara Blvd & Village Ln



 **16** Weekday Boardings

Serves:

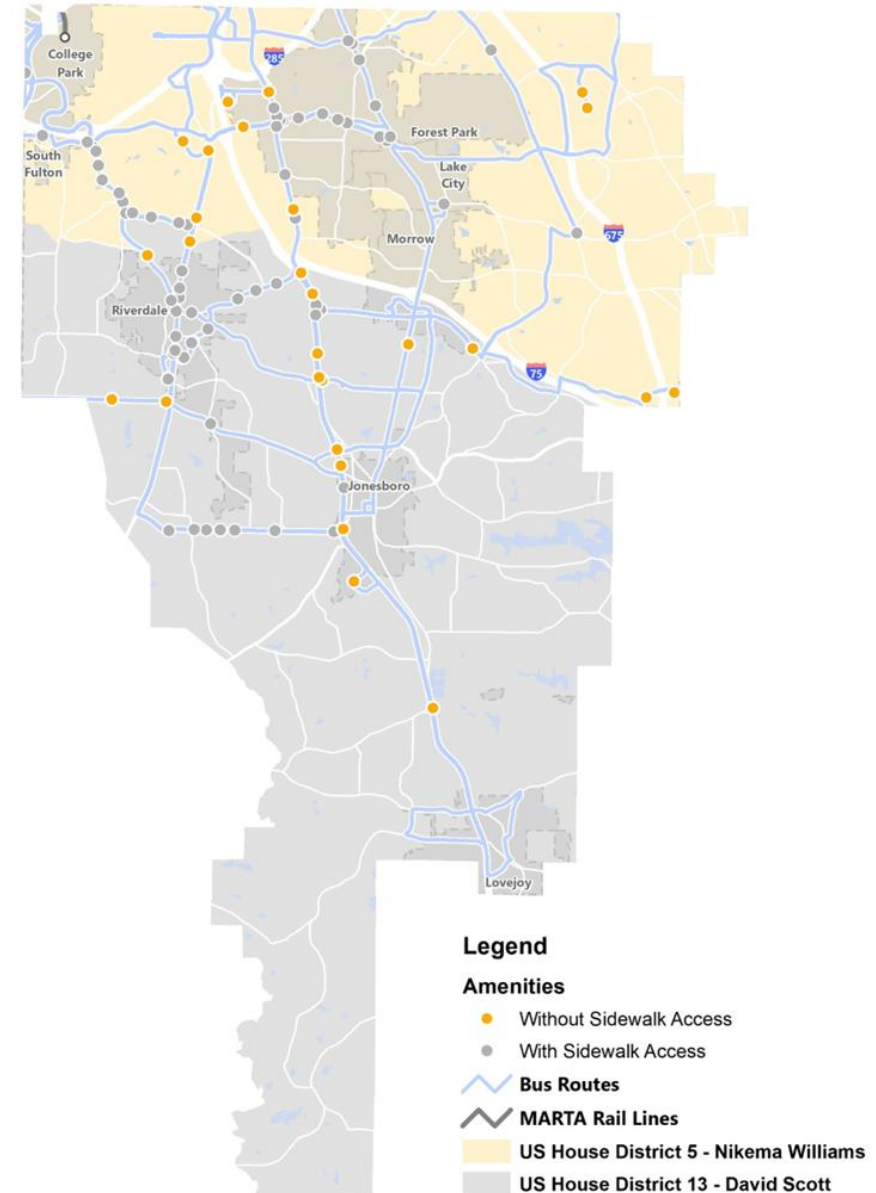
Rivers Edge Apartments,
InTown Suites Extended Stay, Braid Bar Salon,
Turning Point Church

Routes:

192-Old Dixie/Tara Blvd

FY23 SAFE ROUTES TO TRANSIT

- ✓ Clayton County will benefit from
 - ✓ \$1,000,000 to CD13
 - ✓ \$1,000,000 to CD5
- ✓ Thank you to Rep. Scott, Rep. Williams, and Sen. Warnock.
- ✓ MARTA Clayton County Liaison will help coordinate effort between MARTA, Clayton County and Clayton Cities.



JUSTICE CENTER TRANSIT HUB UPDATE

Project Status:

- ✓ 30% design complete, transition to final design underway
- ✓ Project received a \$1M earmark from Rep. David Scott's and Senator Warnock's request.

Projected Completion: Late 2025/Early 2026

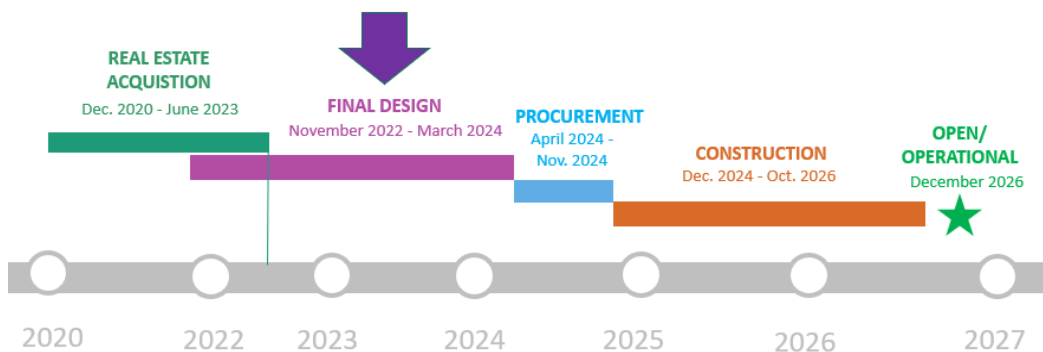


CLAYTON MULTIPURPOSE OPERATIONS & MAINTENANCE FACILITY

Project Status:

- ✓ Site Design
 - ✓ Currently progressing the site layout and building designs from 30% to 60%
 - ✓ Final design will be complete Q1 of 2024
- ✓ Real Estate
 - ✓ Small parcel fully acquired
 - ✓ Large parcel in condemnation process
 - ✓ Finalizing tenants' relocation

Projected Completion: December 2026



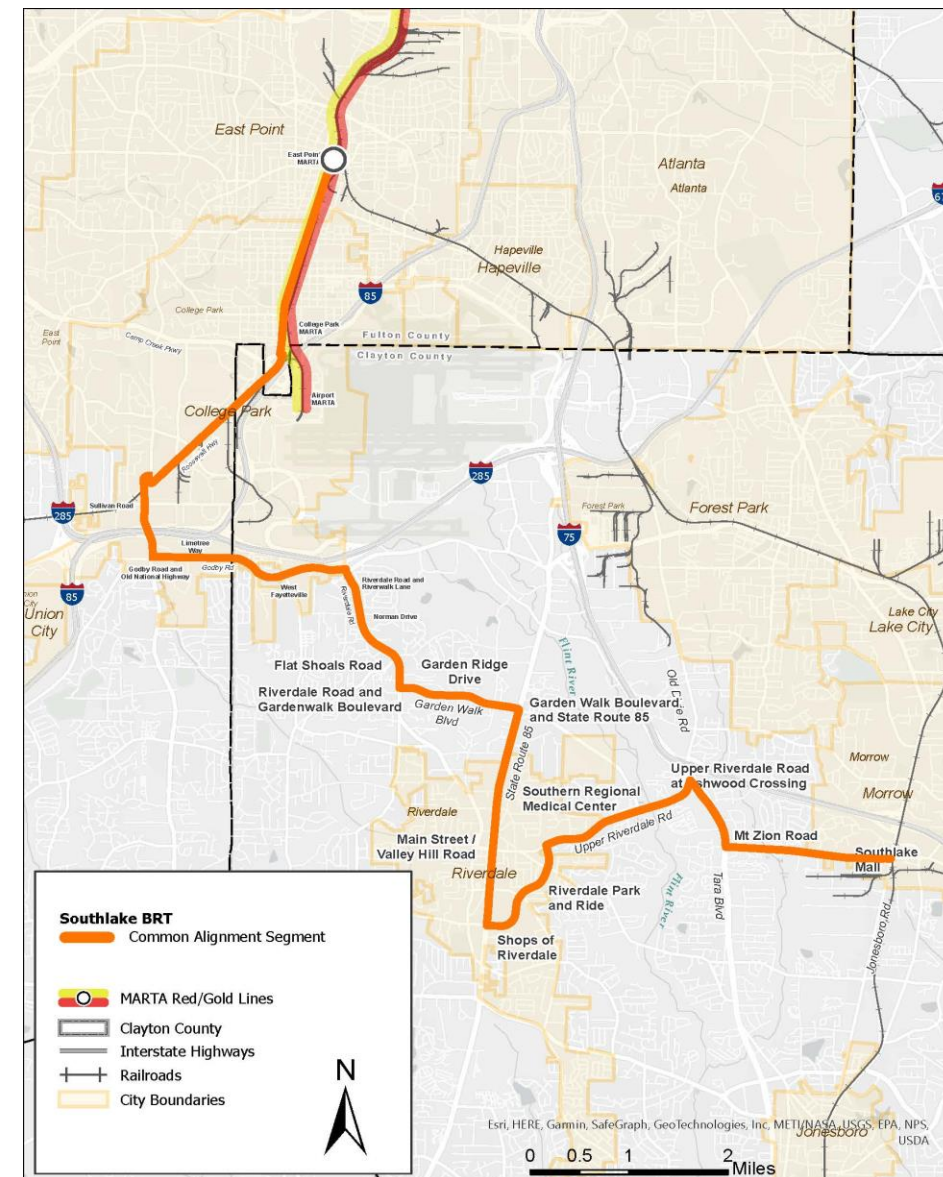
CLOM PROPOSED SITE PLAN
1"=80' 11/16"
CONCEPT 3 REV 1

SOUTHLAKE BUS RAPID TRANSIT UPDATE

Project Status:

- ✓ Federal grant Small Starts Submittal Summer 2023
- ✓ Updating ridership forecast model
- ✓ Refining northern terminus station location
- ✓ Transit-Oriented Development (TOD) study underway to define corridor plans and station areas.
- ✓ Assisting jurisdictions on adoption of recommended transit supportive zoning ordinances

Projected Service Start: 2026

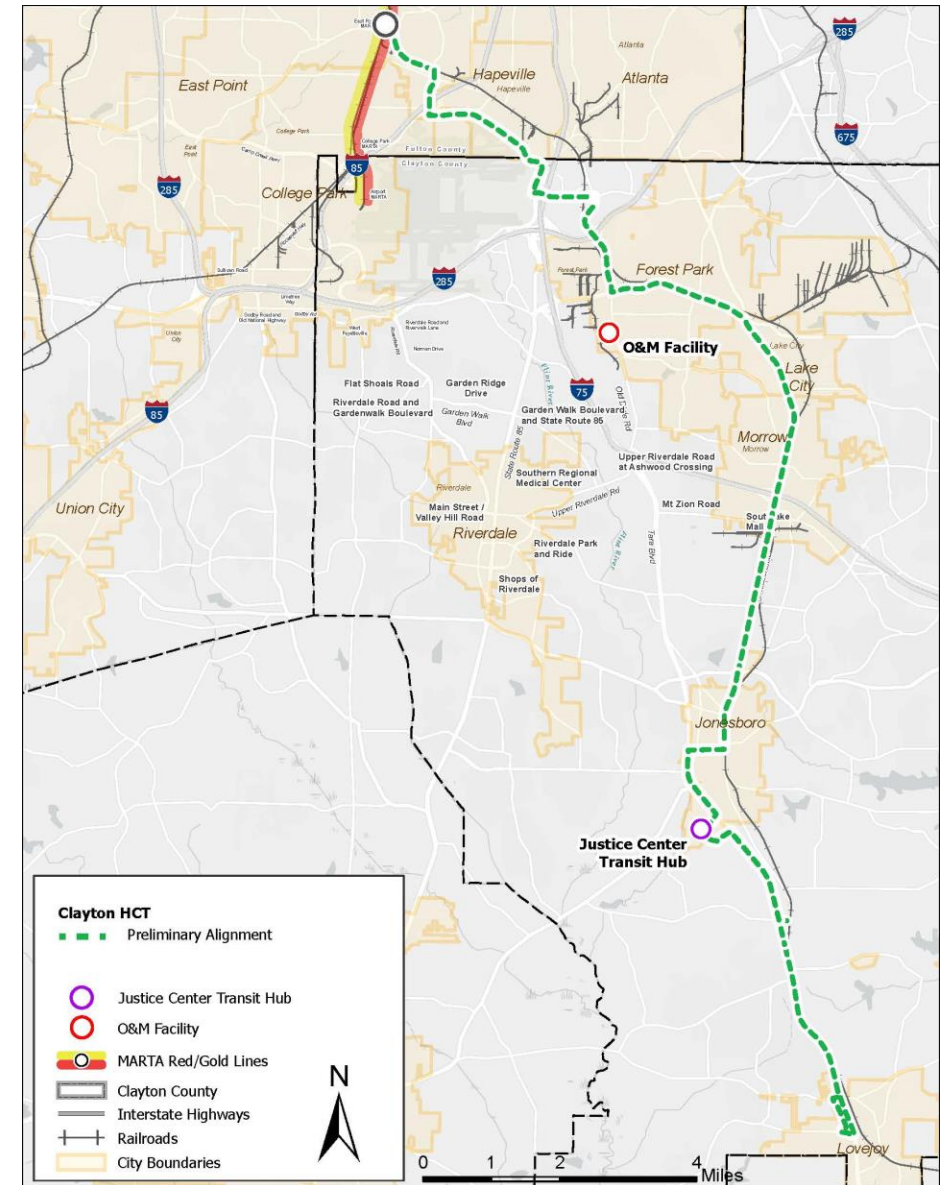


SR54 BUS RAPID TRANSIT UPDATE

Project Status:

- ✓ MARTA Board updated LPA in November 2022 with approval of Bus Rapid Transit as the preferred mode.
- ✓ Evaluating alignment options
- ✓ Identifying station locations
- ✓ Met with Citizen’s Advisory Board (CAB) to confirm strategy for Speaker’s Bureau and other engagement strategies
- ✓ Public meeting early summer
- ✓ Assisting jurisdictions on adoption of recommended transit supportive zoning ordinances

Projected Service Start: 2030



UPCOMING EVENTS

- ✓ **March 8:** South Metro Development Outlook Conference
- ✓ **March 25:** First GOODR mobile grocery market at Tara Stadium
 - ✓ Hosted in GOODR's new mobile grocery bus
 - ✓ Serving 100 Clayton families with a week of fresh groceries
 - ✓ MARTA reps will be on-site for giveaways and distributing information on BRT expansion.
 - ✓ Future 6 events to be scheduled in each district





ARTBOUND

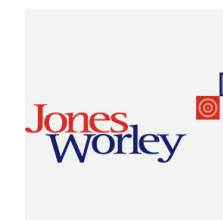


Arts Clayton Executive Director
Brian Hebert

Appointed to MARTA Council for the Arts

DBE ROUNDTABLE

- ✓ Roundtable events held on 9/9/22 and 12/9/22
- ✓ 13 firms participated
- ✓ Outcomes:
 - ✓ Updated bid documents with more robust DBE requirement language
 - ✓ Clarity for audit requirements, formal policy letters issued
 - ✓ Policy issued for payments to be made pending audit approvals
 - ✓ New subconsultant view created in the payment system





Thank You

